

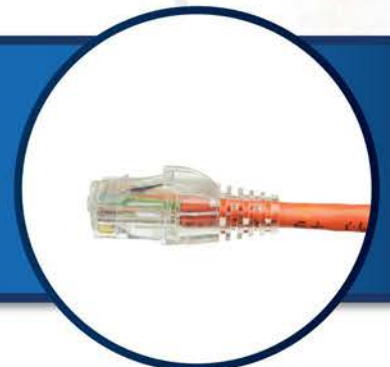


# CATEGORY PRODUCTS

Twisted pair products continue to be an essential part of all networks. Amphenol's Category Products are designed to support increased patch panel density in telecom and premise wiring applications. This modular cabling platform supports network applications such as Gigabit Ethernet, Voice over Internet Protocol (VoIP), and Power over Ethernet (PoE).

Amphenol's Category Products allow a connection migration path from legacy networks to state of the art Data Center and telecom connectivity.

From standard patch cords to customer specific harnesses, Amphenol provides the expertise and reliability needed for all the mission critical connectivity projects.





# PRODUCT TYPE

|                       |     |
|-----------------------|-----|
| CAT Cables .....      | 167 |
| CAT Patch Panel ..... | 169 |



*Connecting People and Technology*

# CAT Cables

Amphenol Category patch cords are designed for ease of use in Data Center applications.

Amphenol's narrow plug design works well in high density panels, and the strain relief assembly with an anti-sag device protects the locking clip and makes installation simple.

Patch cords are compliant to industry standard ANSI/TIA-568-C.2.

Copper cables are available in UL recognized CM jacket, or a combination.

Copper patch cords are available in CAT5e, CAT6 and CAT6A.



## Features and Benefits

CM, Low Smoke Zero Halogen or Dual Rated

Multiple boot color options

Kitting solutions available

Available in Shielded or Unshielded

Variety of Jacket Colors

Easy RJ45 coupling mechanism enables quick installation and the audible click signifies when connected

Pull proof design prevents signal interruption

CM, Low Smoke Zero Halogen or Dual Rated

## Specifications

24 AWG to 26 AWG

Temperature:  
-20 to +75°C

Durability:  
>200 mating cycles

## Applications

Data Communications

MAN and WAN

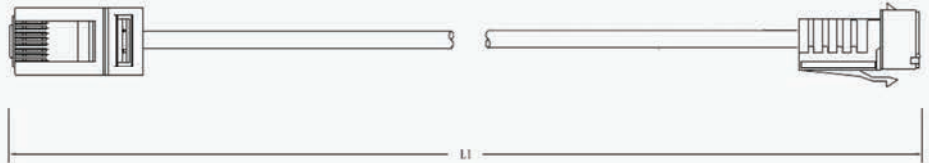
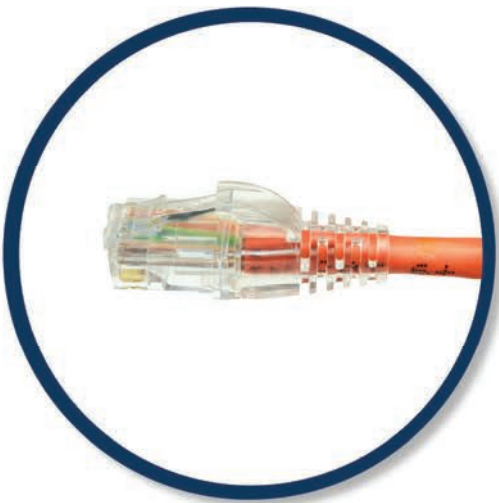
SAN and Data Centers

LAN

Data Centers

## Industry Compliance

RoHS compliant



## Ordering Information

| Part Number     | Description                        |
|-----------------|------------------------------------|
| CAT-5140U1-1005 | JMPR, CAT 5E,W/ANTI-SNAG BOOTS, 5M |
| CAT-5904U0-1007 | JUMPER, CAT 5E UNSHIELDED, 7M      |
| CAT-6100UB-1001 | ASSY, CAT6 UNSHIELDED 4PR BLUE, 1M |
| CAT-6140U1-1005 | JMPR, CAT 6,W/ANTI-SNAG BOOTS, 5M  |
| CAT-6150U1-1005 | JMPR, CAT 6A,W/ANTI-SNAG BOOTS, 5M |
| CAT-6160U1-4005 | ASSY, CAT 6 UNSHIELDED, GREEN, 5M  |

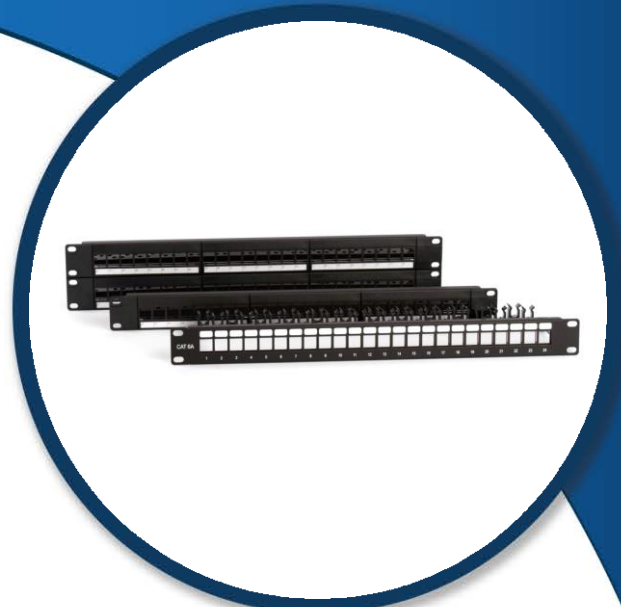
\*Please call customer service for additional configurations

# CAT Patch Panel

Amphenol snap-in type UTP and 10G FTP patch panels are designed for your customized cabling solution.

Keystone connectors can be selected to snap into the panel as required.

A staggered rear cable management on the 10G patch panel helps to minimize alien cross talk and achieve optimum 10G performance.



## Features and Benefits

- Available with blanking panels for ease of upgrade
- Modular design allows for custom configurations
- Rack mounted unloaded patch panels
- Standard size for mounting in 19" racks and cabinet
- Window style label strips with outlet numbers
- Integral cable management in rear
- Modern design and simplicity of mounting
- Numerical marking of ports on t

## Specifications

- Durable heavy gauge steel powder coated for protection
- Metal housing with 1.5mm thick steel
- UL 94V0 rated front mounting on UTP panel

## Applications

- Data Communications
- MAN and WAN
- SAN and Data Centers
- LAN

## Industry Compliance

- RoHS compliant

## Ordering Information

\*Please call customer service for additional configurations

| Part Number  | Description  |
|--------------|--|
| CAT-P601-001 | CAT 5e/6 PATCH PANEL, 24 PORTS, 1RU, 19", UNLOADED |
| CAT-P602-001 | CAT 5e/6 PATCH PANEL, 48 PORTS, 2RU, 19", UNLOADED |

# Amphenol

**FIBER OPTIC PRODUCTS**

